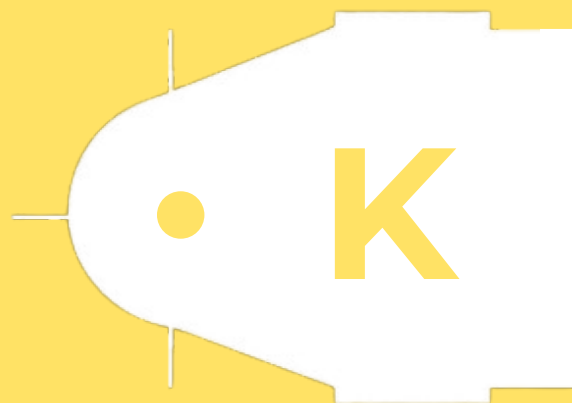


● Accessories

Royal Service Kits



Seal Kits

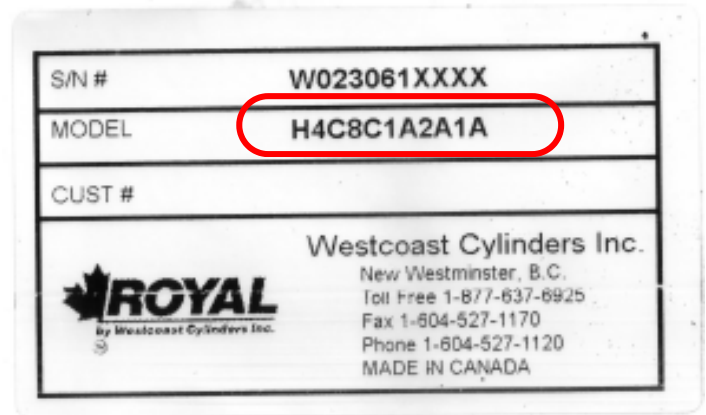
Tie Rod Kits



How to Identify your Royal Cylinder

Part Number

Find the part number on the top of the Royal label present on the cylinder.



Work Order

Find the work order number stamped onto the head of the cylinder.



**Once the Cylinder has been identified,
Contact Royal for the appropriate kit part number**

Call or Email Royal with data plate information for all service kits.

Phone Toll Free: 1-877-637-6925

Email: Sales@royalcylinders.com

Website: www.RoyalCylinders.com

